

Chorley
Council

Planning
Committee Meeting

14 June 2022



Item 31

21/01473/FULMAJ

The Boatyard, Bolton Road, Hoghton

Demolition of the former Grill & Grain Public House and erection of a two storey office building and change of use of the former annex building from ancillary accommodation to commercial use (falling within Use Classes E(a) display or retail sale of goods, other than hot food, E(b) sale of food and drink for consumption (mostly) on the premises, E(c) i financial services, E(c)ii professional services (other than medical services) and/or E(g)i office) with associated car parking, landscaping and works

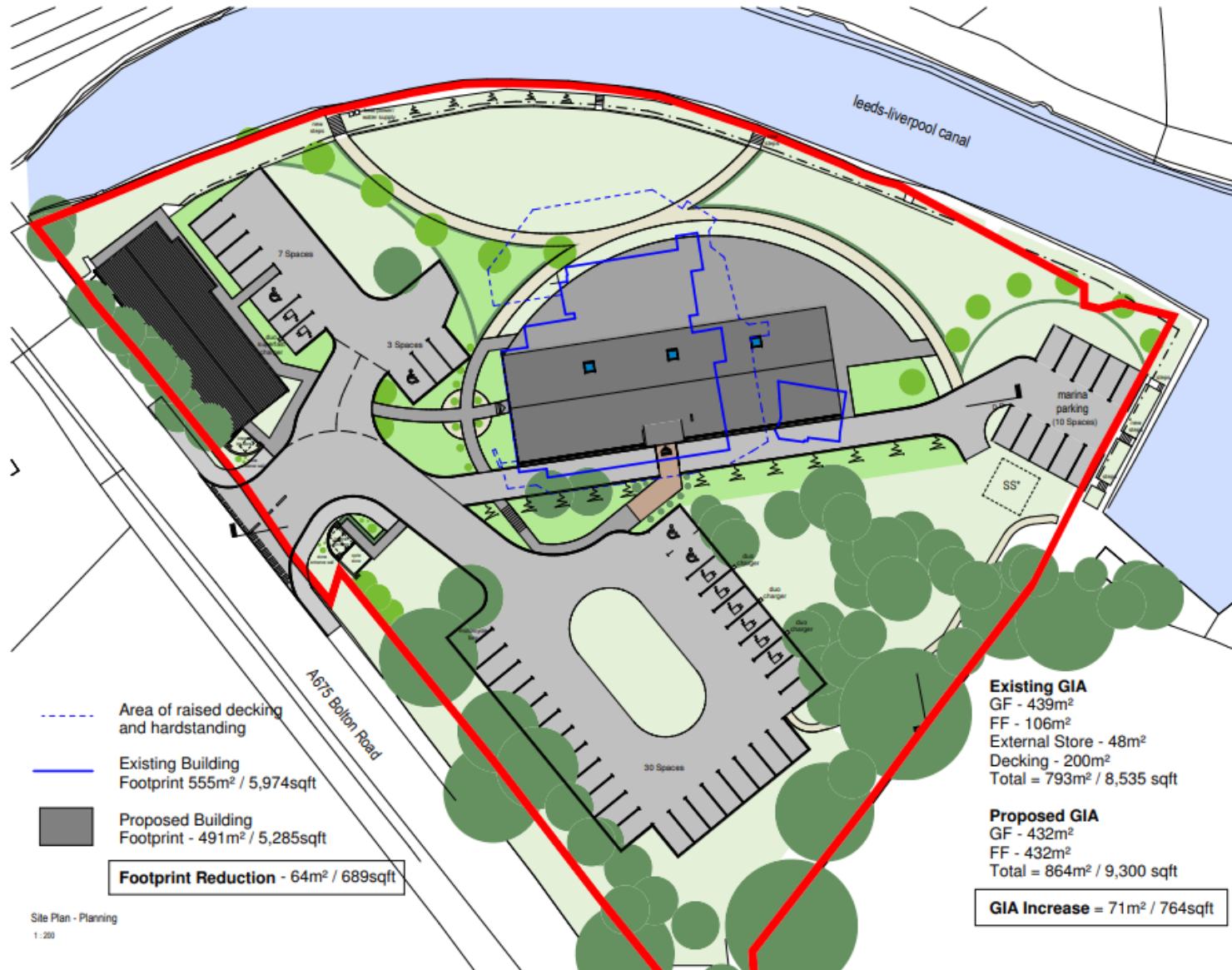
Location Plan



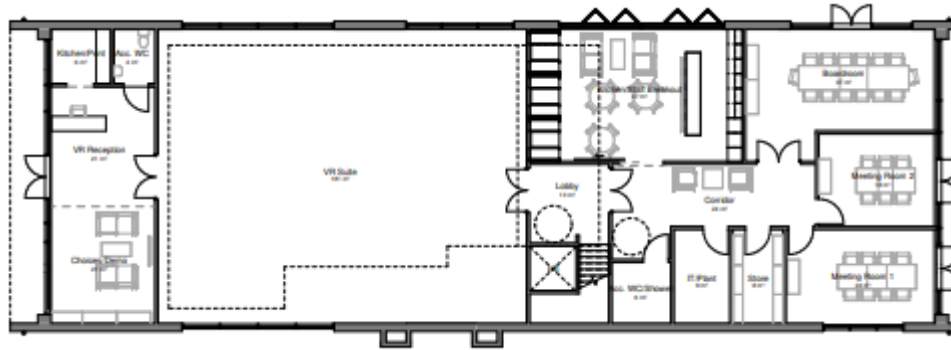
Aerial photo



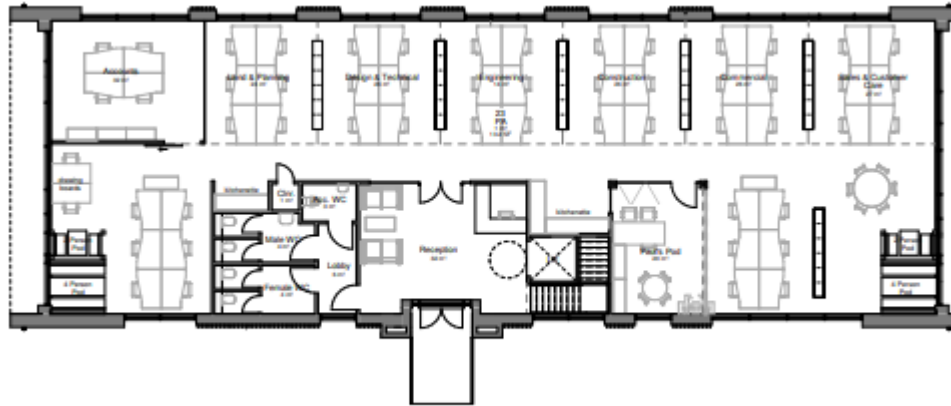
Proposed Site Layout



Proposed Floorplans – Main Office



Ground Floor



First Floor

Proposed Elevations – Main Office



East Elevation
1 : 100



North Elevation
1 : 100

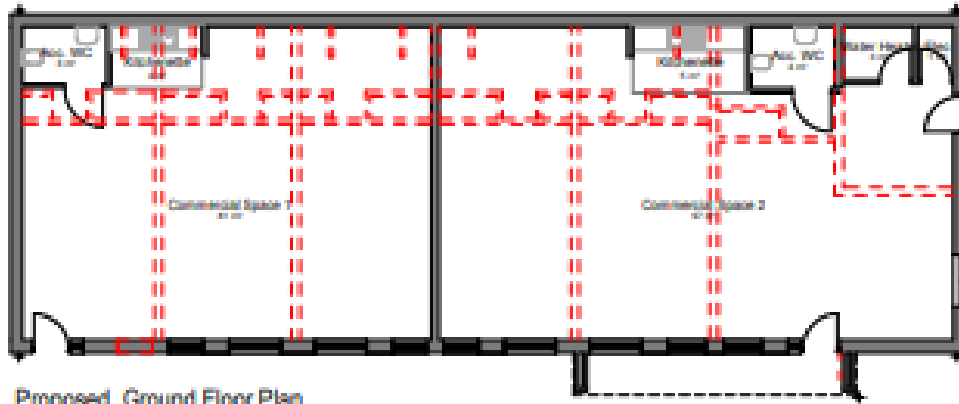


West Elevation
1 : 100

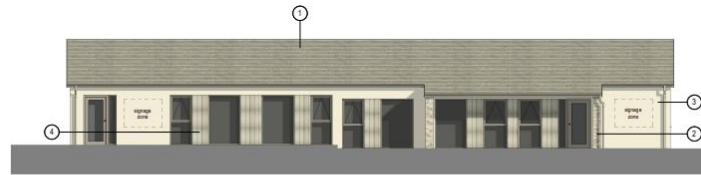


South Elevation
1 : 100

Proposed Floorplan and Elevations – Former Annex



Proposed Ground Floor Plan



Front Elevation



Rear Elevation



Side 1 Elevation



Side 2 Elevation

Building entrance



Canal view



Site photos



Site photos



Site photos



Site photos



Site photos



Site photos

